

mitsui garden
hotel
Ueno

Offering our valued
guests memorable
"Japanese hospitality"

Easily accessible from busy
Ueno station,
our hotel provides quiet,
comfortable accommodation
in well-designed rooms.



Mitsui Garden Hotel Ueno

Check In 15:00 / Check Out 11:00

3-19-7, Higashi-ueno, Taito-ku,
Tokyo, 110-0015

TEL:03-3839-1131 FAX: 03-3839-1605
<http://www.gardenhotels.co.jp/eng/ueno/>



Restaurant BOSCO il CHIANTI (Italian)1F



Lobby



Superior Twin



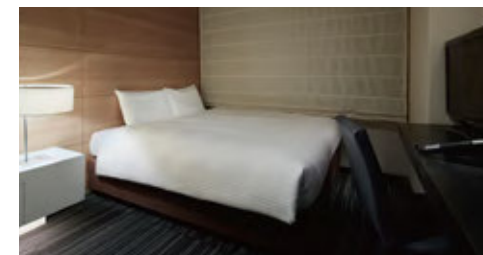
Moderate [18m²]

18.0m² rooms, semi-double bed 140cm wide and spacious. We support your business and sightseeing.



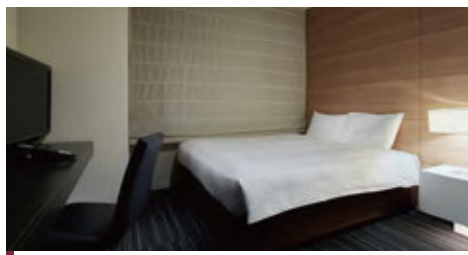
Superior Twin [25m²]

Art Appreciation and be able to relax and slow your holidays, we have provided the tea table and chairs.



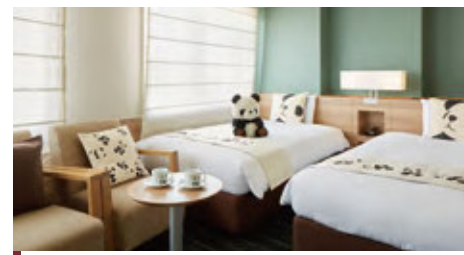
Moderate Double[18m²]

Spacious 160cm double bed, We support your business and sightseeing.



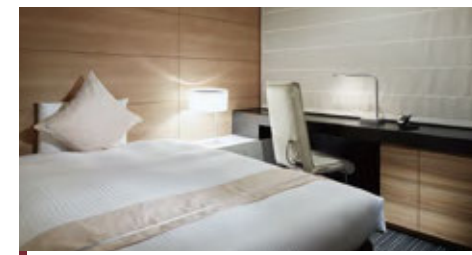
Superior Double[20m²]

Arranged a spacious double bed room will comfortably support the tourism and business.



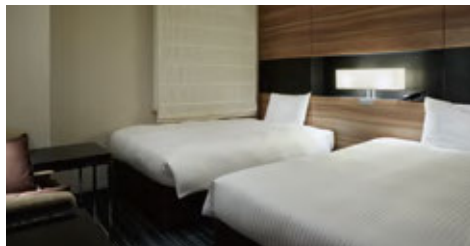
Panda Room [25m²]

Came to the hotel's Favorite Ueno Zoo ♪ Favorite as it is arranged in Ueno Zoo, wrapped in panda-friendly space. To help your relaxation from children to the elderly.



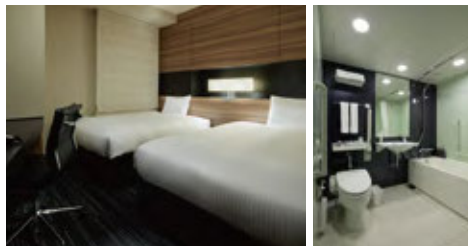
Ladies Single [18m²]

Just perfect for ladies ... A modern urban space with the welcoming warmth of tastefully arranged bed throws and cushions. Please relax in a room beyond the everyday.



Moderate Twin[22m²]

Twin room with two beds available 120cm wide. We offer comfort in your time of serene interior of the wood base.



Universal Twin[22m²]

This functional room allows all guests (including the elderly and those with wheelchairs) to enjoy a safe and comfortable stay.

Internet service

Wireless LAN internet service is available in all guest-rooms, while guests may also set up a wired network connection using the provided LAN cable. This service is complimentary and available 24 hours a day.

Essential Items Room Facilities

- Toothbrush ●Razor ●Hairbrush ●Cotton & hair band kit
- Cotton swabs ●Shampoo ●Hair conditioner ●Body soap
- Face & hand soap ●Green tea kit ●Mineral water ●Face towel
- Bath towel ●Slippers ●Nightwear ●Tea ●Mouthwash
- Bath salts ●Shower cap ●Body washing towel ●Hair dryer(nano care)
- Steamer nano care ●Hair iron ●Air purifier with humidifier function

*We ask all guests to pay in advance. *There are no service charges.

*Accommodation Tax is charged separately.



Restaurant BOSCO iL CHIANTI (Italian)

We offer new dishes developed from a base of Italian cuisine. Please enjoy the comfort of our relaxed and friendly setting.



Information

Breakfast	Buffet style 1,600yen (2017.4.2~)
Floor	1F
TEL	03-3831-3993
Open	Breakfast 7:00a.m.~10:00a.m.(Last Entry 9:30a.m.)
	Lunch 11:30a.m.~3:00p.m.(Last Entry 2:30p.m.)
	Dinner Mon-Fri 5:30p.m.~11:00p.m.(Last Entry 10:30p.m.) Sat, Sun&Hol 5:00p.m.~10:30p.m.(Last Entry 10:00p.m.)
	For certain reasons,restaurant may be closed without notice.
Number of seats	56 seats
Smoking / Nonsmoking	Breakfast, lunch - all non-smoking Dinner - some smoking tables available

Art Space

Our rooms reflect our sense of "greenery, culture, history and art".

The deep greenery of Ueno Park's groves surround an area rich in art and culture. Our idea was to create a similar atmosphere in our hotel another peaceful grove in Ueno, so to speak.

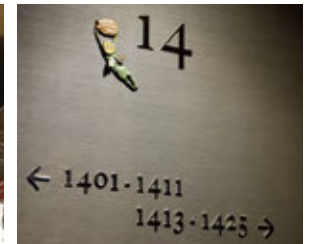
The hotel's theme is "habitants of the forest".

You will find art works and objects by three graduates of Tokyo University of the Arts displayed in various places in our hotel.

Fairies' Hospitality

Artist: Mariko SAJI

On display: in the 1F Lobby area, the elevators, in each floor's elevator area



Birth of Life

Artist: Tetsuto KINOSHITA

On display: in Superior Twin rooms

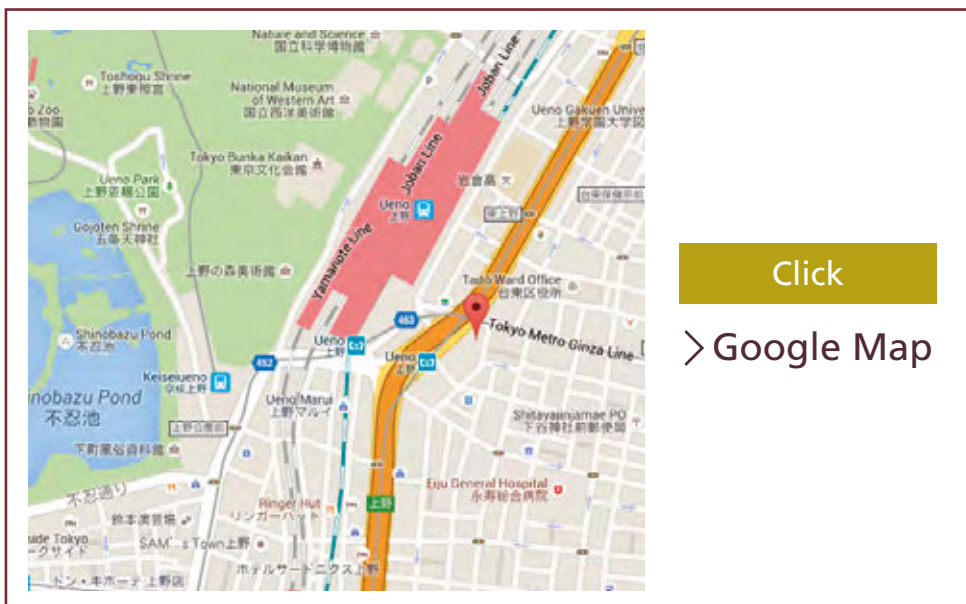


Good Neighbors

Artist: Masashi KIRIYAMA

On display: in the public spaces on each floor





Local sightseeing spots

- Tokyo Sky Tree
Take the Ginza subway line to Asakusa station, and change to the Toei Asakusa subway line to Oshiage station (about 15 minutes from the hotel)
- Sensoji temple
Take the Ginza subway line to Asakusa station (about 6 minutes by subway)
- Ueno Park
(About a 10-minute walk from the hotel)
- Ameyoko (Ameya Yokocho) market street
(About a 10-minute walk from the hotel)
- Akihabara
Take the JR Yamanote line or Keihin-Tohoku line to Akihabara station (about 5 minutes by train)

By Train

- 2 minutes on foot from the Asakusa Exit of JR Ueno Station
- 1 minute on foot on the right side from Exit 1 of Tokyo Metro Ginza Line / Hibiya Line
- 6 minutes on foot from Keisei Ueno Station

By Car

- Approx. 400m from "Ueno" Exit of Ueno No.1 Route of Metropolitan Expressway

By Plane

When coming from Haneda Airport

- Approx. 45 minutes from Haneda Airport to Hamamatsucho Station by monorail and from Hamamatsucho Station to Ueno Station by JR

When coming from Narita Airport

- Approx. 60 minutes from Airport Terminal 2 of Narita Airport to Ueno by Keisei Skyliner
- Approx. 90 minutes from Narita Airport to Tokyo Station by JR and from Tokyo Station to Ueno station by JR

Hotel Information

Restaurant

BOSCO iL CHIANTI (Italian)

- Breakfast 7:00a.m.~10:00a.m. (Last Entry 9:30a.m.)
- Lunch 11:30a.m.~3:00p.m. (Last Entry 2:30p.m.)
- Dinner Mon-Fri 5:30p.m.~11:00p.m. (Last Entry 10:30p.m.)
Sat, Sun&Hol 5:00p.m.~10:30p.m. (Last Entry 10:00p.m.)
- TEL.03-3831-3993

For security reasons, the hotel's main entrance is locked from 1:00 a.m. to 6:00 a.m. When you wish to enter the hotel between 1:00 a.m. and 6:00 a.m., please use your hotel room key card, or use the intercom to call the Front Desk staff.

Mitsui Garden Hotel Ueno

Check In 15:00 / Check Out 11:00

3-19-7, Higashi-ueno, Taito-ku, Tokyo, 110-0015

TEL:03-3839-1131 FAX: 03-3839-1605 <http://www.gardenhotels.co.jp/eng/ueno/>