



## Mitsui Garden Hotel

Yokohama Minatomirai PREMIER

Unwind in a place  
where the wind settles,  
and soothe your heart with  
the melody of the waves  
at our sky-high  
Minato Mirai hotel.

Venture beyond the 20th floor lobby  
and explore our lounge, sky pool,  
and spacious guest rooms.

Thanks to its design concept  
—Yokohama Sky Cruising—the hotel makes  
for an ideal base for both sightseeing  
and business activities.



### Mitsui Garden Hotel

Yokohama Minatomirai PREMIER

Check In 15:00 / Check Out 11:00

3-3-3 Minato Mirai, Nishi-ku, Yokohama City,  
Kanagawa, 220-0012

TEL: +81-45-227-1311 FAX: +81-45-227-1312

[https://www.gardenhotels.co.jp/  
yokohama-minatomirai-premier/eng/](https://www.gardenhotels.co.jp/yokohama-minatomirai-premier/eng/)







## Executive, 1 bed King, corner room [46.1m<sup>2</sup>]

A large corner room with a king-size bed and separate water facilities (bath, powder room and toilet). During your stay, enjoy breathtaking panoramic bay views of Minato Mirai from the room's two massive windows.

## Executive, 2 beds, corner room [46.1m<sup>2</sup>]

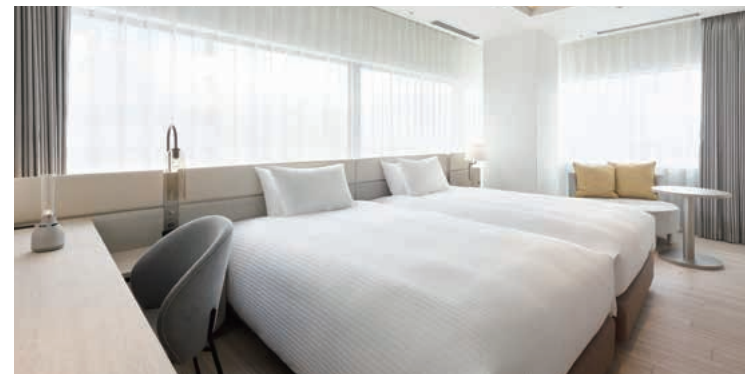
A large corner room with Hollywood-style twin beds and separate water areas (bath, powder room and toilet). During your stay, enjoy breathtaking panoramic bay views of Minato Mirai from the room's two massive windows.



## Deluxe, 1 bed King, corner room

[36.6m<sup>2</sup>]

A corner room with two large windows, a table, an ottoman, and comfortable chairs. Relax and admire stunning views of Yokohama from the comfort of your room.



## Deluxe, 2 beds, corner room

[36.6m<sup>2</sup>]

A corner room with a table, an ottoman, and comfortable chairs. Relax and admire stunning views of Yokohama from the comfort of your room.

## Deluxe, 2 beds [32.6m<sup>2</sup>]

A room with Hollywood-style twin beds, an armchair, a sofa, and a table. Unwind with superb views of Minato Mirai from your window.



## Deluxe, 2 beds (+ extra) [32.6m<sup>2</sup>]

A room with Hollywood-style twin beds, an armchair, a sofa bed, and a table. Unwind with superb views of Minato Mirai from your window.



# Guest room information

Mitsui Garden Hotel Yokohama Minatomirai PREMIER



## Deluxe, 1 bed Queen, with projector [30.0m<sup>2</sup>]

A room with a queen-sized bed, an L-shaped sofa, and a table. The room is also equipped with a projector so you can leisurely watch your favorite content on a wide screen.



## Deluxe, 1 bed King [32.6m<sup>2</sup>]

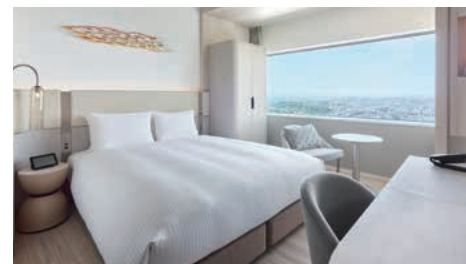
A room with a king-sized bed, an armchair, a sofa, and a table. De-stress with sparkling views of Minato Mirai from your window.



## Deluxe, 3 beds

[32.6m<sup>2</sup>]

A room with three 1,230mm-wide beds—perfect for a trip with family or friends. Admire dazzling views of Minato Mirai with your loved ones.



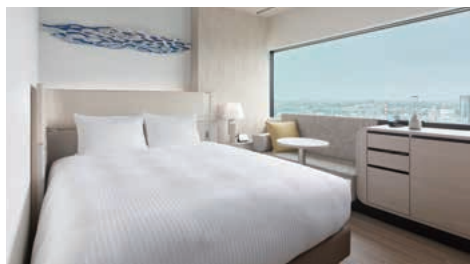
## Superior, 1 bed Queen, with washing machine [26.4m<sup>2</sup>]

Make yourself at home during longer stays with our microwave oven and washing machine. You will never tire of the views of Yokohama's lush greenery and the iconic form of Mount Fuji on clear days.



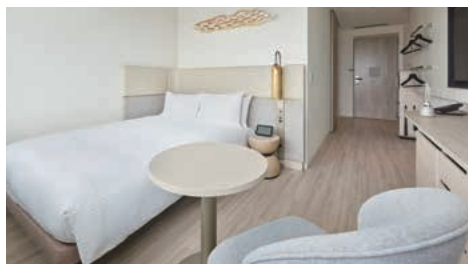
## Superior, 1 bed Queen, chair type [26.4m<sup>2</sup>]

A room with a queen-sized bed, armchair, and table. From here, you can appreciate views of Yokohama's lush greenery and Mount Fuji on clear days.



## Superior, 1 bed Queen, sofa type [25.4m<sup>2</sup>]

A room with a queen-sized bed, sofa, and table where you can relax by the window.



## Accessible, 1 bed Double [26.4m<sup>2</sup>]

Our carefully designed rooms are wide enough to ensure that all guests—including wheelchair users and the elderly—can lodge comfortably. Bask in views of Mt. Fuji from your room on clear, sunny days.

## Internet Connection

The entire building has wireless LAN. You can connect to the wireless LAN for free from places such as your room, the lobby, and the restaurant. You can also use your smartphone and tablet on the LAN.

## Amenities

- Toothbrush set
- Razor
- Hairbrush
- Shower cap
- Cotton swabs
- Cotton and hair tie
- Shampoo
- Conditioner
- Body soap
- Face & hand soap
- Coffee
- Green tea kit
- Mineral water
- Nightwear

\* The area of this room is calculated using the center line of the wall, including the pipe shaft. The number is rounded off to one decimal place.

\* The number of baby cots we offer is limited, so please inquire in advance.

\* We do not have a service charge. \* Please pay in advance before checking in.





Restaurant [20F]  
RISTORANTE E`VOLTA -Unico Polo-

With unparalleled views, enjoy a meal and conversation at our modern Italian restaurant and bar, located on the 20th floor. Based on the concept of "a ristorante that travels around the world," we offer sophisticated cuisine that fuses seasonal ingredients, world seasonings, spices, techniques, and spirit.



Information

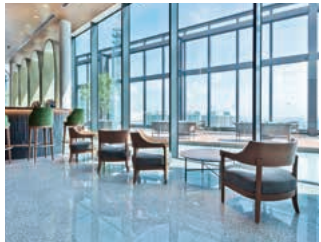
Breakfast	Japanese and Western Buffet	¥3,520 (tax included)
Floor	20F	
Tel	+81-45-306-6731	
Opening Hours	Breakfast	7:00a.m.~10:30a.m. (Last entry 10:00a.m.)
	Lunch	11:30a.m.~4:00p.m. (Last entry 2:00p.m.)
	Café	2:00p.m.~4:30p.m. (Last entry 4:00p.m.)
	Dinner	5:30p.m.~10:00p.m. (Last entry 9:00p.m.) [Last order Course menu 8:00p.m. Drinks 9:00p.m.]
Seats	135 seats available (130 seats during breakfast hours)	
Smoking Nonsmoking	All seats are non-smoking	
*Please note the menu and the service time may change without notice.		

Bar [20F]  
BAR BELLO GATTI

BELLO GATTI, which roughly translates to "beautiful cats" in Italian, is a romantic gathering place featuring an arched design inspired by the balustrade of a Venetian bridge. Admire waterside night views of Minato Mirai as if you are relaxing on a boat.

Information

Floor	20F	Seats	29 seats available
Tel	+81-45-323-9201	Smoking Nonsmoking	All seats are non-smoking
Opening Hours	5:00p.m.~11:00p.m. [Mon – Fri](Last order Food menu 10:00p.m. Drinks 10:30p.m.)		
	12:00p.m.~11:00p.m. [Sat, Sun & Hol] (Last order Food menu 10:00p.m. Drinks 10:30p.m.)		
	※ There is an additional 10% service charge at night.		





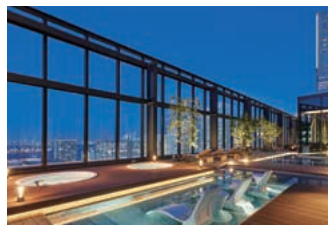


## sky pool LA MAGNOLIA [20F]

Our hotel features two pools, available free of charge to hotel guests. We hope you will experience both our indoor (length 8.6m, depth 1.2m) and outdoor (length 9m, depth 0.5m) pools during your stay. Our outdoor bath also offers a jacuzzi bath experience. Enjoy a relaxing time gazing at the sea or looking up at the open sky, like you are in a resort.

### Information

Cost	For exclusive use of hotel guests : free of charge		
Floor	20F	Tel	+81-45-323-9401
Opening Hours	3:00p.m.~9:00p.m. [Mon – Fri] (Last admission 8:00p.m.) 9:00a.m.~10:00p.m. [Sat, Sun & Hol] (Last admission 9:00p.m.)		
	Regarding the use of the sky pool: *No swimming allowed *For your own safety, please do not enter the pool if you are under 140cm Minors under the age of 16 are allowed to use the pool until 6:00p.m., however they must be accompanied by a guardian. *Toys are not allowed in the pool (including inflatable rings, balls, etc.) *Depending on how crowded the pool becomes, we may impose a usage limit and/or reservation system. *The sky pool is unavailable to inebriated guests or guests with tattoos. For guests wishing to use the sky pool, please use a tattoo cover.		



## Salon [20F]

### Information

Cost	Free
Floor	20F
Opening Hours	6:30a.m.~11:00p.m.
Player piano performance	8:00a.m.~10:00a.m. 3:00p.m.~5:00p.m. 8:00p.m.~10:00p.m.

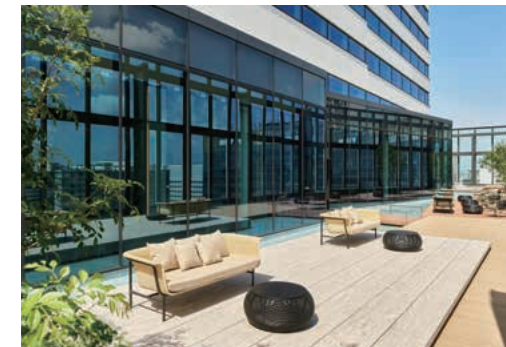


## Outdoor terrace [20F]

### Information

Cost	For exclusive use of hotel guests : free of charge
Floor	20F
Opening Hours	6:00a.m.~12:00a.m.

\*May be unavailable during inclement weather or other circumstances.



## Fitness Room [20F]

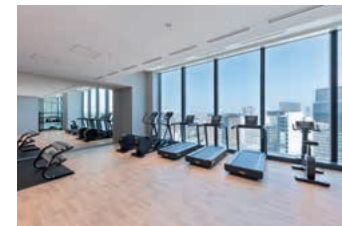
Train your body while overlooking Yokohama's scenery with Technogym's latest machines.

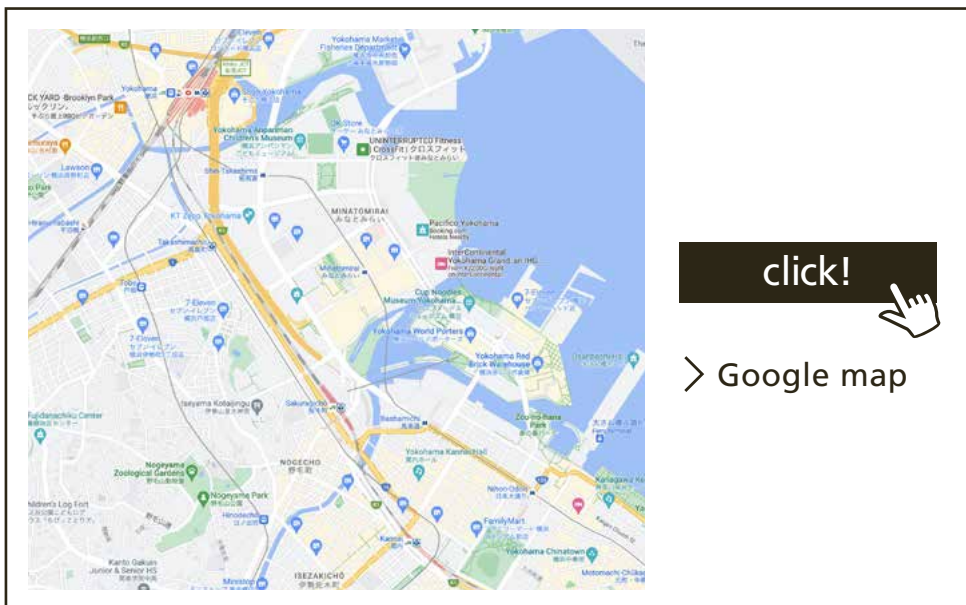
### Information

Cost	For exclusive use of hotel guests : free of charge
Floor	20F
Opening Hours	6:00a.m.~10:00p.m.

Water Cooler, Run Personal treadmill x3,  
Cross trainer x2, Exercise bike x1,  
an adjustable bench (x1), dumbbells,  
foam rollers, fitness mats, and more.

\*There are no locker or shower facilities in our fitness room.  
\*We request that guests bring their own training wear and shoes.  
\*For safety and security Children 16 years old or younger are not allowed in the fitness room.





## Local sightseeing spots

- Yokohama Landmark Tower  
: four-minute walk from the hotel
- Yokohama Anpanman Children's Museum  
: 12-minute walk from the hotel
- Yokohama Cosmo World  
: 15-minute walk from the hotel
- Yokohama CUPNOODLES Museum  
: 15-minute walk from the hotel
- Yokohama Red Brick Warehouse  
: 20-minute walk from the hotel
- Yokohama Chinatown  
: four-minute train ride from Minato Mirai Station to Motomachi-Chukagai Station on the Minatomirai Line

## By train

- About 5 min. walk from Exit 5 of Minatomirai Station on the Minatomirai Line.
- About 10 min. walk from Sakuragicho Station on the JR Negishi Line.

## By Shinkansen (bullet train)

- From Nagoya ..... About 1 hour and 40 min. on the Tokaido Sanyo Shinkansen (alight at Shin-Yokohama Station)
- From Osaka ..... About 2 hours and 40 min. on the Tokaido Sanyo Shinkansen (alight at Shin-Yokohama Station)

## By car

- About 1 min. from the Minatomirai Ramp on the Metropolitan Expressway Yokohane Line.

## Parking

- ☐ Hotel guest fee ..... 2,000 yen per night (including tax)  
Parking time: 1:00p.m. - 1:00p.m. the next day (unable to enter the parking lot between 11:00p.m. and 7:00a.m.)  
**\*Parking rate for hotel guests will be changed to 2,500yen (tax included) per night from October 1st. 2025.**
- ☐ Number of parking spaces ... 226 (multi-story parking lot)  
\*The parking lot is not exclusively for the hotel. If there are no spaces available, please use another nearby parking lot.

## Access from airport

### From Haneda Airport

- About 28 min. from the Keiiky Haneda Airport Line terminal to Yokohama Station using the Keiiky Airport Line Airport Express. Transfer to the Minatomirai Line at Yokohama Station, stay on the train for about 3 min, and alight at Minatomirai Station.
- About 30 min. by limousine bus. Transfer to the Minatomirai Line at Yokohama Station, stay on the train for about 3 min, and alight at Minatomirai Station.

### From Narita Airport

- About 1 hour 30 min. by JR Narita Express/JR Lines. Transfer to the Minatomirai Line at Yokohama Station, stay on the train for about 3 min, and alight at Minatomirai Station.
- About 1 hour 30 min. by limousine bus. Transfer to the Minatomirai Line at Yokohama Station, stay on the train for about 3 min, and alight at Minatomirai Station.

## Hotel Information

### Restaurant [20F]

#### RISTORANTE E'VOLTA -Unico Polo-

- Breakfast .... 7:00a.m.~10:30a.m. (Last entry 10:00a.m.)
- Lunch ..... 11:30a.m.~4:00p.m. (Last entry 2:00p.m.)
- Café ..... 2:00p.m.~4:30p.m. (Last entry 4:00p.m.)
- Dinner ..... 5:30p.m.~10:00p.m. (Last entry 9:00p.m.)  
(Last order Course menu 8:00p.m. Drinks 9:00p.m.)

### Bar [20F] BAR BELLO GATTI

- 5:00p.m.~11:00p.m. [Mon - Fri]  
(Last order Food menu 10:00p.m. Drinks 10:30p.m.)
- 12:00p.m.~11:00p.m. [Sat, Sun & Hol]  
(Last order Food menu 10:00p.m. Drinks 10:30p.m.)

### Outdoor terrace [20F]

- Cost ..... For exclusive use of hotel guests : free of charge
- Opening Hours .. 6:00a.m.~12:00a.m.

### Salon [20F]

- Cost ..... Free
- Opening Hours .. 6:30a.m.~11:00p.m.
- Player piano .. 8:00a.m.~10:00a.m.  
performance 3:00p.m.~5:00p.m. / 8:00p.m.~10:00p.m.

### sky pool LA MAGNOLIA [20F]

- Cost ..... For exclusive use of hotel guests : free of charge
- Opening Hours .. 3:00p.m.~9:00p.m. [Mon - Fri]  
(Last admission 8:00p.m.)  
9:00a.m.~10:00p.m. [Sat, Sun & Hol]  
(Last admission 9:00p.m.)

### Fitness Room [20F]

- Cost ..... For exclusive use of hotel guests : free of charge
- Opening Hours .. 6:00a.m.~10:00p.m.

## Mitsui Garden Hotel Yokohama Minatomirai PREMIER

Check In 15:00 / Check Out 11:00

3-3-3 Minato Mirai, Nishi-ku, Yokohama City, Kanagawa, 220-0012  
TEL: +81-45-227-1311 FAX: +81-45-227-1312  
<https://www.gardenhotels.co.jp/yokohama-minatomirai-premier/eng/>