



Kyoto's warm hospitality  
welcomes you,  
and the pleasure of  
your journey starts here.

Located in the center of Kyoto,  
the capital of one thousand years where you can enjoy  
the old imperial city ambiance.  
Our modern atmosphere and  
the Kyoto sensibility  
make you long for another night's stay in our hotel.



Mitsui Garden Hotel  
Kyoto Shijo

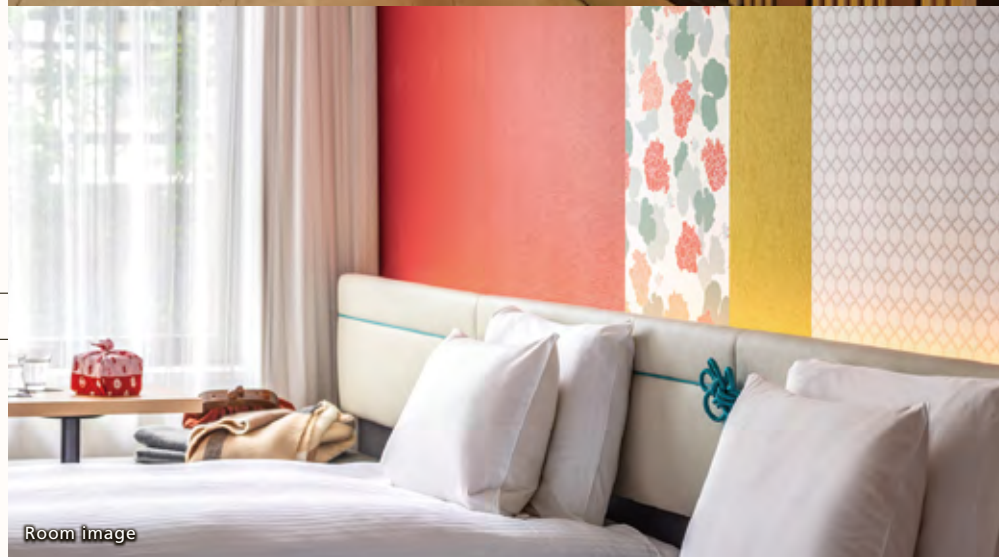
Check In 15:00 / Check Out 11:00

707-1 Myodenji-cho, Shijo-sagaru,  
Nishinotoin St, Shimogyo-ku, Kyoto, 600-8472  
TEL:+81-75-361-5531 FAX:+81-75-361-5100

[https://www.gardenhotels.co.jp/  
kyoto-shijo/eng/](https://www.gardenhotels.co.jp/kyoto-shijo/eng/)



Lobby



Room image



Restaurant

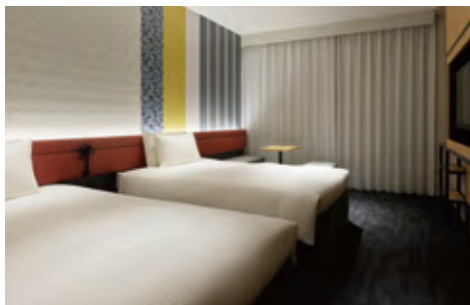




**Superior , 1 bed WideKing** 【22~27㎡】  
Occupancy:2persons Bed:2,220 × 1,970mm



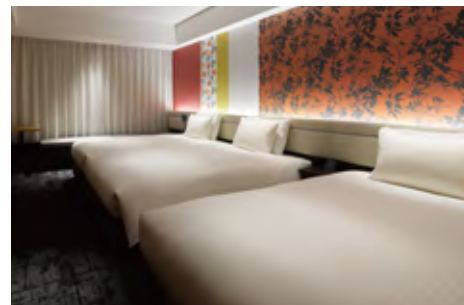
**Superior , 4 beds** 【32~33㎡】  
Occupancy:4persons Bed:1,110 × 1,970mm



**Superior , 2 beds** 【22㎡】  
Occupancy:2~3persons  
Bed:1,110 × 1,970mm



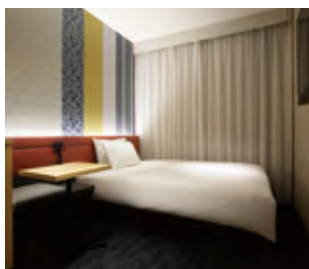
**Standard , 2 beds** 【19㎡】  
Occupancy:2persons  
Bed:1,110 × 1,970mm



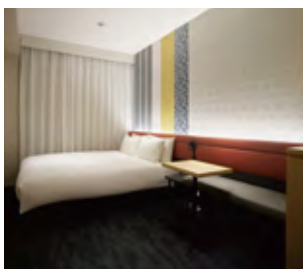
**Superior , 3 beds** 【25~29㎡】  
Occupancy:3persons  
Bed:1,110 × 1,970mm



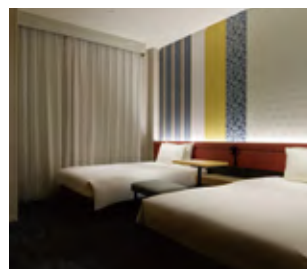
**Superior , 1 bed Queen** 【21㎡】  
Occupancy:2persons  
Bed:1,640 × 1,970mm



**Standard , 1 bed Single** 【15㎡】  
Occupancy:1person  
Bed:1,230 × 1,970mm



**Standard , 1 bed Double** 【17~19㎡】  
Occupancy:2persons  
Bed:1,510 × 1,970mm



**Accessible , 2 beds** 【26㎡】  
Occupancy:2persons  
Bed:1,110 × 1,970mm

## Internet service

Wireless LAN internet service is available in all guest-rooms.

## Bathroom amenities

### In room

- Shampoo ● Hair conditioner ● Body soap ● Amenity bag
- Face & hand soap ● Nightwear
- Mineral water ● Green tea ● Coffee

### At lobby

- Toothbrush kit ● Razor ● Shaving cream
- Hairbrush ● Shower cap ● Cotton & Hair tie ● Cotton swabs

\*The area of this room is calculated using the center line of the wall, including the pipe shaft.





Breakfast venue  
Restaurant KOZUE  
【The 2nd floor】

Our breakfast buffet offers a variety of dishes including "Obanzai" Kyoto-style home cooking, Seasonal vegetable salads, dashi-tyaduke(rice with soup stock).  
Kyoto pickles, and much more. Enjoy the taste of Kyoto cuisine to your heart's content.

Information

Breakfast	Buffet style 2,200yen (including tax)
Floor	The 2nd floor
Opening Hours	Breakfast 6:30a.m.-10:00a.m. (Last Entry 9:30a.m.)
Smoking/ Nonsmoking	All non-smoking

Large Public Bath  
【The 1st floor】

We understand the pleasure of slipping Information into a large hotel bath. Even travelers can stretch out and let the tiredness of the day melt away in a moment ... Our guests really appreciate the comfort of our public bath. Our guests really appreciate the comfort of our public bath.

Information

Fee	Guest Only : Free
Floor	The 1st floor
Opening Hours	3:00p.m.~9:00a.m.
Amenities	● Shampoo ● Hair conditioner ● Body soap ● Face soap ● Cleansing ● Lotion ● Emulsion ● Cotton swabs ● Hair dryer ● Water server ● Weight scale
*Please take a towels and bath amenities are available in your room or Amenities bar in lobby for use at the public large bath. *Depending on the time of day the bath might be extremely crowded.	



## Local sightseeing spots near the hotel

- Yasaka Shrine – traveling time: about 20 minutes  
Hotel-Bus 46 or 201 from the bus stop 'Shijo Nishinotouin'-Get off at the bus stop 'Gion'
- Nijo-jo Castle – traveling time: about 10 minutes  
Hotel-Bus 12 or 50 from the bus stop 'Shijo Nishinotouin'- Get off at the bus stop 'Nijo-jo-mae'
- Kinkakuji shrine – traveling time: about 30 minutes  
Hotel- Bus 12 from the bus stop 'Shijo Nishinotouin'- Get off at the bus stop 'Kinkakuji-michi' and walk for about 5 minutes
- Kiyomizudera Temple – traveling time: about 30 minutes  
Hotel - Bus 207 from the bus stop 'Shijo Nishinotouin' - Get off at the bus stop 'Kiyomizu-michi' and walk for about 10 minutes
- Arashiyama District – traveling: about 40 minutes  
Hotel - from Karasuma Station take the Hankyu Railway to Katsura Station, and change to Hankyu Railway Arashiyama Line for Arashiyama Station.

## By Train

- 6 minutes on foot from Exit 26 of Karasuma station of Hankyu Kyoto Line
- 6 minutes on foot from Exit 2 of Shijo Station of Subway Karasuma Line

## By Bus

- From Kyoto station : About 10 minutes  
Bus 50 from the bus stop 'Kyoto-eki-mae'-Get off at the bus stop 'Shijo Nishinotouin'

## By Car

- About 20 minutes from Kyoto South Inter change on the Meishin Expressway

## Baggage Service

We provide a "Baggage service (with fees)" between our hotel and Mitsui Garden Hotel Kyoto Station.

### Before Check-In

- After you have arrived in Kyoto, check your baggage at Mitsui Garden Hotel Kyoto Station. You can then retrieve your baggage at your hotel when checking in.

### After Check-Out

- Check your baggage when checking out your hotel. You can then pick up your baggage at Mitsui Garden Hotel Kyoto Station.

### Lounge service & Business corner

- Guests using the baggage service are also welcome to enjoy the lounge service at "Mitsui Garden Hotel Kyoto Station" for free. The lounge has non-alcoholic drinks such as coffee, and a PC is available. Take a breather during your trip or browse our sightseeing information. Enjoy your time to the fullest here.  
Opening hours 12:00 - 24:00

Mitsui Garden Hotel Kyoto Shijo

Check In 15:00 / Check Out 11:00

1707-1 Myodenji-cho, Shijo-sagaru, Nishinotoin St, Shimogyo-ku, Kyoto, 600-8472

TEL:+81-75-361-5531 FAX:+81-75-361-5100

<https://www.gardenhotels.co.jp/kyoto-shijo/eng/>