

mitsui garden  
hotel  
Gotanda

**Sky & Garden Resort**

Aiming for a hotel that rises above the city's clamor, we present an extraordinary, luxurious space that includes a first-floor Italian restaurant, a fifteenth-floor front desk and lobby, and top-floor large public baths. Please enjoy a moment of elegance in the center of the city.



Mitsui Garden Hotel Gotanda

Check In 15:00 / Check Out 11:00

2-2-6 Higashigotanda, Shinagawa-ku,  
Tokyo, 104-0031  
TEL: 03-3231-3131 FAX: 03-3276-3111



Moderate Twin



Male public bath



15 F Lobby



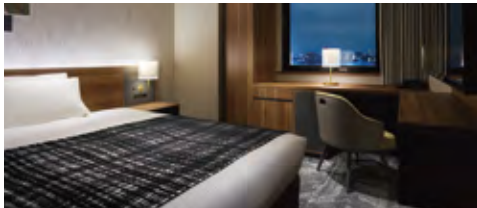


## Comfort Double [18.2㎡]

In this room you will find a sense of privacy for business purposes on weekdays, as well as a simple desk and a comfortable chair that gives you space to stretch your legs. The room has a 1.5 m-wide double bed, so it suits couples staying on weekends.

## Comfort Ladies Double [18.2㎡]

This room has a sense of privacy, a simple desk and a comfortable chair to help you to relax. The room is exclusively for women and offers peace of mind.



## Moderate Double [18.2㎡]

The room is laid out with a wide desk facing the window, making it fine for business purposes. With its 1.4 m-wide bed, the room can also accommodate couples.

## Moderate Ladies Double [18.2㎡]

The room, laid out with a wide desk facing the window, is exclusively for women and offers peace of mind.

## Superior Double [18.5㎡]

This room features a separate shower booth, toilet and vanity corner. Couples can also utilize the room comfortably. It is a special room where you can feel more relaxed.

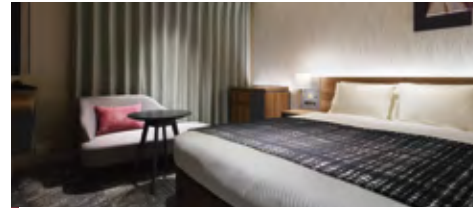
## Superior Ladies Double [18.5㎡]

Ease back on the room's lounge chair and footstool for greater relaxation. This room is exclusively for women and offers peace of mind.



## Superior Twin [24.0㎡]

This room features a separate shower booth, toilet and vanity corner. Two guests can utilize the room comfortably. It is a special room where you can feel more relaxed.



## Moderate Queen [18.5㎡]

With its 1.6 m-wide bed, this room gives couples more space to relax. The generous sofa also invites guests to spend time in comfort.



## Moderate Twin [24.0㎡]

This spacious room with chairs and a table helps guests feel relaxed. We also have rooms that convert to triples for family groups or groups of travellers.



## Accessible Double [24.7㎡]

This room is appointed with a large bathroom unit that includes a toilet and a washbasin. A wide desk and an easily viewable TV add to the comfortable utility of this practical room.



## Deluxe Twin [36.8㎡]

Spacious room of 36.8 m<sup>2</sup>. The room has a special atmosphere with a 1.4 width bed and an independent unit bath.

### Internet service

Wireless access all through the hotel. All rooms, lobby, restaurant are equipped with wireless internet access (free of charge)

### Amenities

- Toothbrush set ● Cotton buds ● Body soap ● Tea set ● Shaving razor
- Shampoo ● Conditioner ● Face / Hand soap ● Night wear ● Hair brush

\* The area of this room is calculated using the center line of the wall, including the pipe shaft. The number is rounded off to one decimal place.





Female public bath

## [1F] Restaurant Tanto Tanto The Gardens

An open restaurant that is surrounded by green space. Seats on the refreshing terrace are also available.

### Information

Breakfast	Italian buffet 1,850 yen/person (tax included)
TEL	03-5447-8118
Floor	1F
Opening Hours	Breakfast 6:30a.m.-10:00a.m. (Last entry 9:30a.m.)
	Lunch 11:30a.m.~03:00p.m. (Last entry 02:30p.m.)
	Dinner [Weekdays] 05:30p.m.-11:00p.m. (Last entry 10:00p.m.) [Sat, Sun & holidays] 05:00p.m.-11:00p.m. (Last entry 10:00p.m.)
Smoking / Non-smoking	All seats are non-smoking all day

\* Please note that the menu and the service time may change without notice.

## Lawson

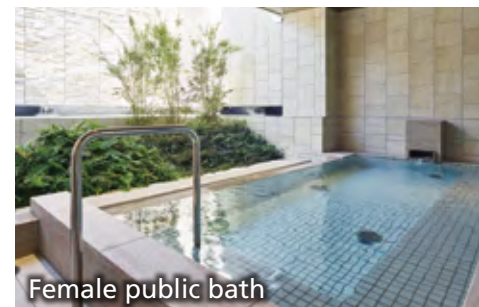
This convenience store offers a wide range of products, from daily necessities to food. It is open 24-hours a day for your convenience, so please feel free to pop in anytime.



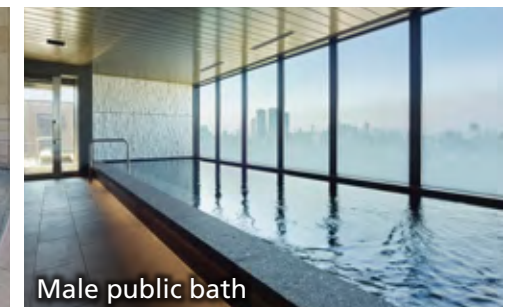
## [16F] Large Public Bath SPA

From the top floor, the large public bath opens vistas of the city center and the sky above. Please relax in the calmness of a moment.

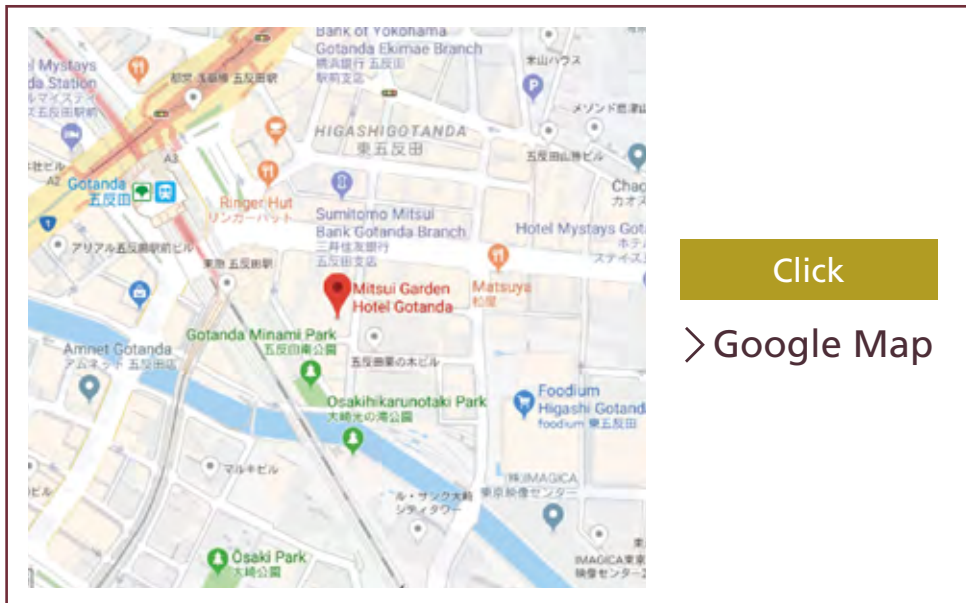
- Free of charge for staying guests
- Opening hours 03:00p.m.~01:00 a.m. / 06:00a.m.~09:00a.m.



Female public bath



Male public bath



## Local Sightseeing Spots

- **Shibuya**  
About 10 minutes from Gotanda station "JY23" to Shibuya station "JY20" on the JR Yamanote line
- **Shinjuku**  
About 17 minutes from Gotanda station "JY23" to Shinjuku station "JY17" on the JR Yamanote line
- **Asakusa**  
About 27 minutes from Gotanda station "A05" to Asakusa station "A18" on the Toei Asakusa subway line
- **Ginza**  
Ginza: About 23 minutes from Gotanda station "A05" to Higashi-ginza station "A11" on the Toei Asakusa subway line, then take the Tokyo Metro Hibiya subway line to Ginza station "H08"
- **Tokyo Disney Resort**  
About 50 minutes from Gotanda station "JY23" on the JR Yamanote line to Tokyo station "JY01", then walk about 15 minutes to the Keiyo line platforms and take the JR Keiyo line to Maihama station "JE07"
- **Tokyo Tower**  
About 22 minutes from Gotanda station "A05" to Daimon station "A09" on the Toei Asakusa subway line
- **Tokyo Skytree**  
About 34 minutes from Gotanda station "A05" to Oshiage station "A20" on the Toei Asakusa subway line
- **Odaiba**  
About 27 minutes from Gotanda station "JY23" to Shinbashi station "JY29" on the JR Yamanote line.  
Walk to Shinbashi station "U01" on the Yurikamome light rail line to Daiba station "U07"

## By train

- About 3 minutes' walk from the East Exit of Gotanda station "JY23" on the JR Yamanote line
- About 3 minutes' walk from the main exit of Gotanda station "IK01" on the Tokyu Ikegami line
- About 3 minutes' walk from Exit A3 of Gotanda station "A05" on the Toei Asakusa subway line

## By Plane

- Haneda Airport (about 20 minutes by Keiku line) ▶  
Shinagawa station "KK01" / "JY25" (about 5 minutes by JR Yamanote line) ▶ Gotanda station "JY23"
- Narita Airport (About 70 minutes by JR Narita Express) ▶  
Shinagawa station "JY25" (about 5 minutes by JR Yamanote line) ▶ Gotanda station "JY23"

## Hotel Information

### Large Public Bath SPA [16F]

- Free of charge for staying guests  
● Opening hours 03:00p.m.~01:00 a.m. / 06:00a.m.~09:00a.m.

### Restaurant

- Tanto Tanto The Gardens [1F]  
● Breakfast 6:30a.m.-10:00 a.m. (Last entry 9:30a.m.)  
● Lunch: 11:30a.m.-03:00p.m. (Last entry 02:30p.m.)  
● Dinner: [Weekdays] 05:30p.m.-11:00p.m. (Last entry 10:00p.m.)  
[Sat, Sun & holidays] 05:00p.m.-11:00p.m. (Last entry 10:00p.m.)

### Convenience Store

- Lawson [1F]  
● It is open 24-hours a day

Mitsui Garden Hotel Gotanda

Check In 15:00 / Check Out 11:00

2-2-6 Higashigotanda, Shinagawa-ku, Tokyo, 104-0031  
TEL: 03-3231-3131 FAX: 03-3276-3111